

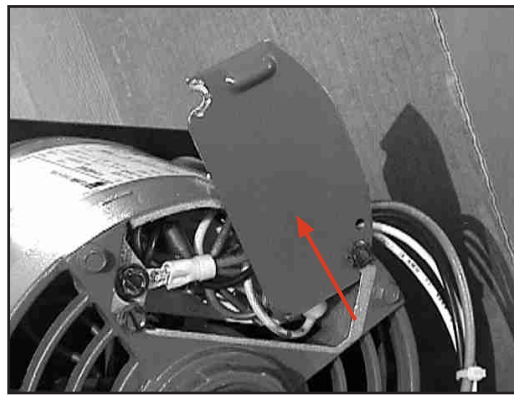
Large and Small Gear Replacement

(page 1)

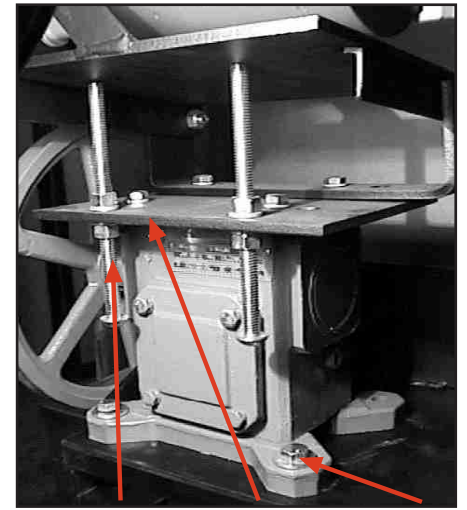
1. Disconnect power and remove the hanger racks.
2. Remove the gearbox cover by removing the retaining bolts and lifting up on the cover. (fig. 1)
3. Remove the wiring access plate on the end of the drive motor. Make note of the wire locations and unplug the black and white wires from the motor also loosen the screw and remove the green ground wire. (fig. 2)
5. Remove the four 5/16-18 x 1 1/4" bolts and nuts that fasten the base of the gearbox to the mounting plate. (fig. 3)
6. Pull straight back and remove gearbox; motor; and mounts as an assembly. (fig. 4)
7. Place the assembly on a work surface. Remove the small gear and key way from the end of the gearbox output shaft by removing the retaining bolt and loosening the set screw. On some gears it may be necessary to replace the retaining bolt and use a puller to remove the gear. (fig. 5&6)



(fig.1) gearbox cover



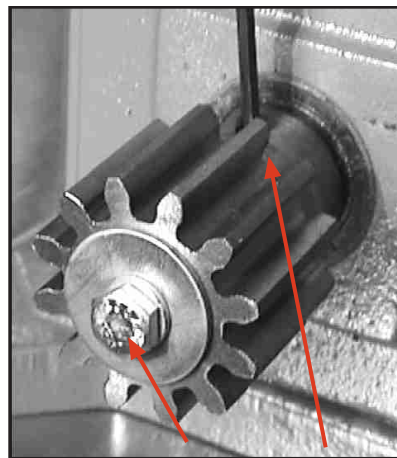
(fig.2) wire access cover on motor



(fig.3) tension bolts, motor bolts, gearbox bolts



(fig.4) gearbox motor assembly



(fig.5) small gear bolt and set screw



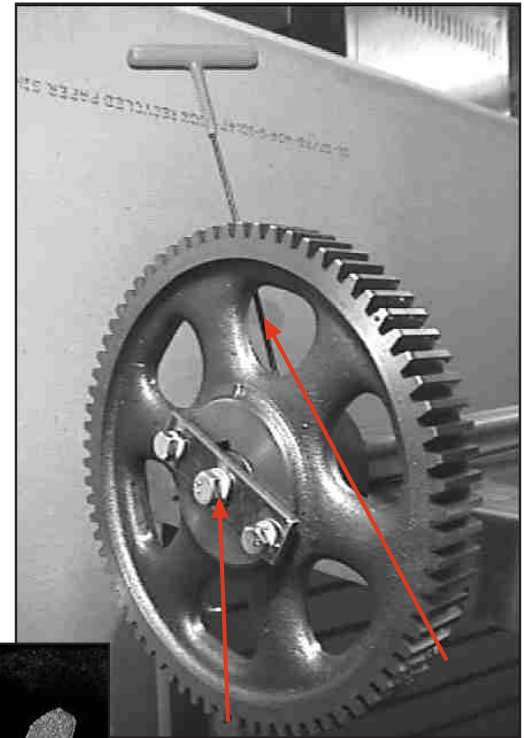
(fig.6) gear puller if necessary

Large and Small Gear Replacement

(page 2)

8. On the face of the large gear remove the two 5/16-18 x 1/2" bolts and the 3/8-16 x 1/2" bolt that hold the retaining strap and large gear to the axle. (fig.7)
9. Loosen the set screws on the large gear hub and pull it off the end of the axle. (fig.7)
10. Check key way for wear before using it on the new gear. If it shows signs of wear it should be replaced.

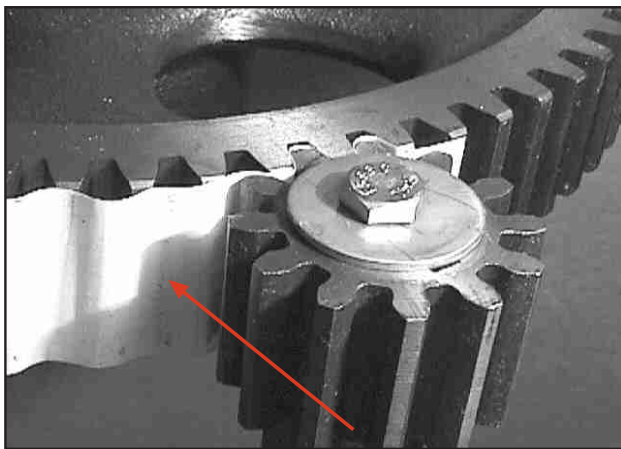
Note: On re-assembly, be sure both gears are in line and the gear box assembly is pushed over enough to cause the gears to mesh snug. Play in the gears will result in rotisserie wheel play. (fig.8) to check for proper alignment, carefully feed a 1 1/2" strip of paper between the gears. (fig.9) note marks on the paper made by the gear teeth. The marks should be even across the paper. (fig.10) if they are uneven and cut the paper re-align. (fig.10)



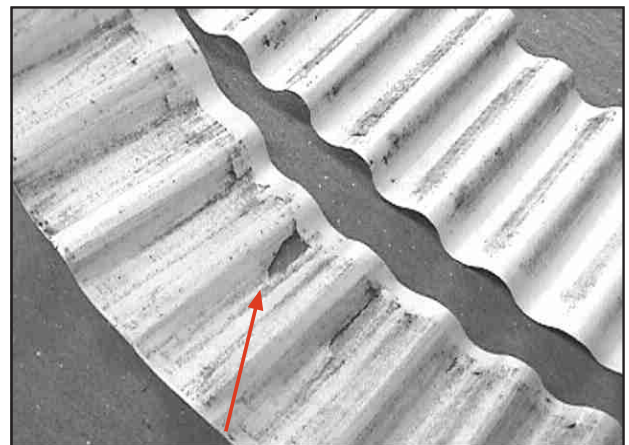
(fig.7) mounting bolts and set screw



(fig.8) large and small gear union



(fig.9) 1.5" wide piece of paper between the gears



(fig.10) rips or uneven marks in paper mean it needs realigned