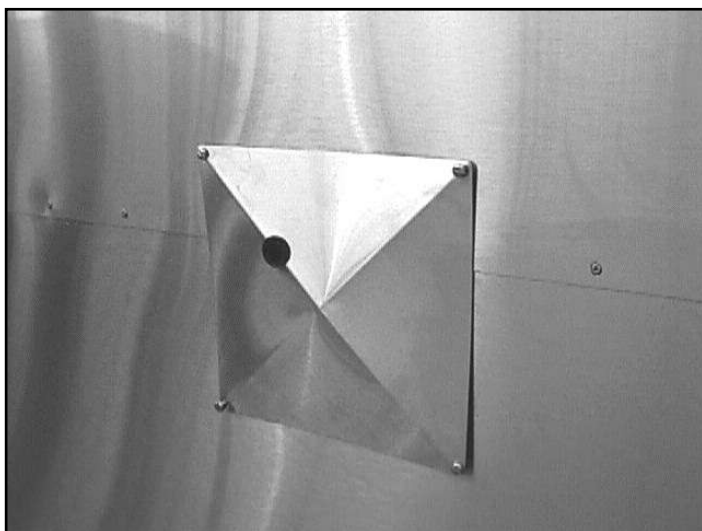


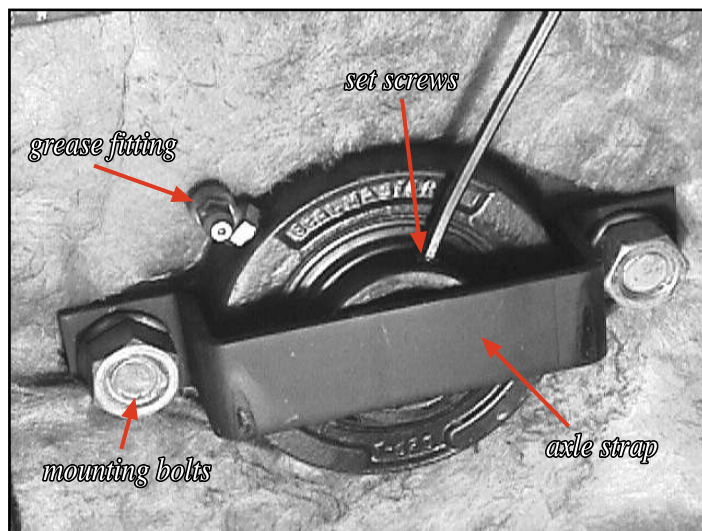
# Drive Axle Bearing Replacement

(for the bearing opposite the gearbox)

1. Disconnect the power.
2. To replace the bearing opposite the gearbox. Remove the four bearing cover screws and remove the cover. (fig. 1)
3. Loosen the two set screws on the bearing hub with a suitable allen wrench. While holding the allen wrench in the second set screw, rotate the bearing hub to help remove burrs caused by the set screws. ( fig. 2)
4. Remove the two 1/2-13 x 1 1/4" bolts and nuts that hold the bearing and axle retainer in place. The bolts may have to be held from inside the oven. The axle will drop down slightly when it is pulled free. (fig.2)
5. Note the position of the 90° grease fitting and remove this fitting from the old bearing and put it on the new one in the place of the straight fitting . (fig. 2) **Note:** Later model ovens use bearings that do not need grease, there will be no grease fitting on those bearings.
6. When re-installing the new bearing, the axle will have to be picked up slightly to enable the bolts to line up with the holes in the liner. Be sure to tighten all bolts and set screws.
7. Reattach the bearing cover.



(fig.1) Bearing cover

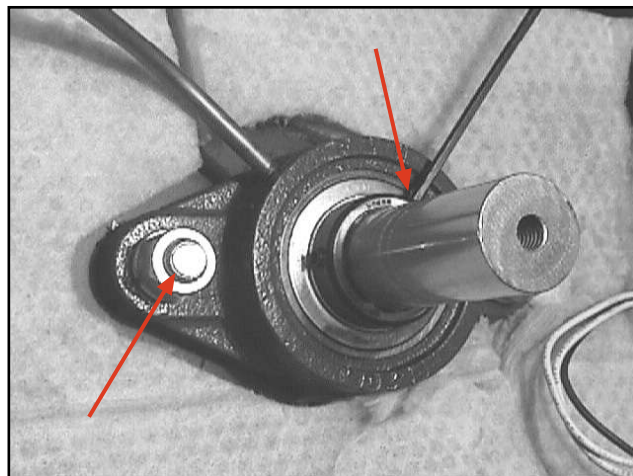


(fig.2) Bearing assembly

# Drive Axle Bearing Replacement

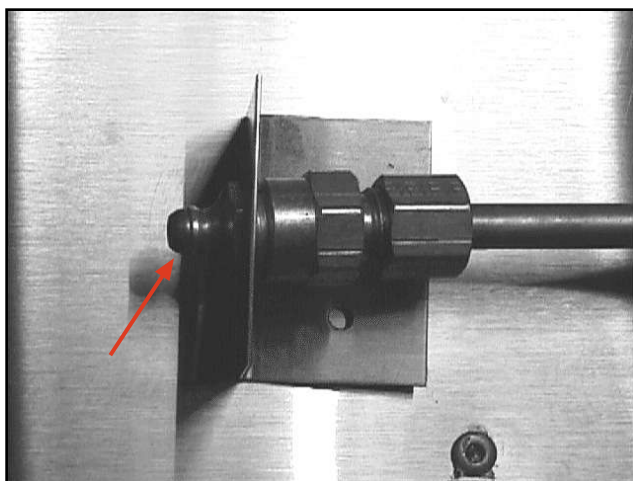
(for the bearing on the gearbox)

1. Disconnect the power.
2. Follow procedure for replacing the bearing on opposite side of the gearbox.
3. With the drive system and large gear removed. Loosen the two set screws on the bearing hub with a suitable allen wrench. While holding the wrench in the second set screw rotate the bearing hub using the wrench for leverage to remove any burrs caused by the set screws. (fig. 1)



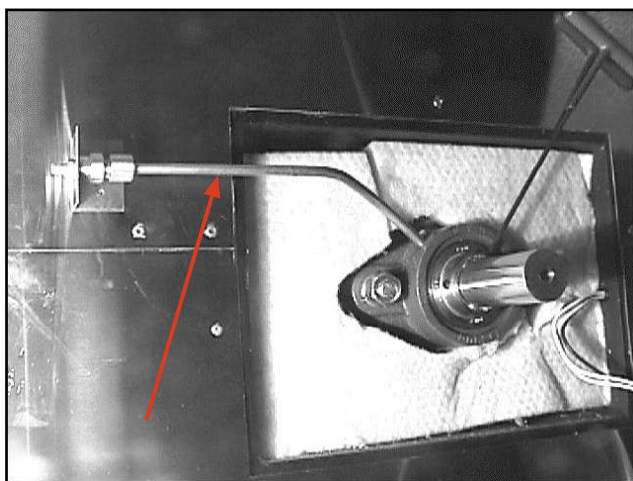
(fig.1) Bearing with set screws and mounting bolts

4. Using wrenches remove the grease fitting from the compression fitting on the end of the grease tube that holds the tube to the mounting bracket. Save this fitting. (fig.2) Note: Later model ovens use bearing that don't require grease (no grease fitting).
5. Remove the two 1/2-13 x 1 1/4" bolts and nuts that hold the bearing to the liner. (fig. 1) and pull the bearing off of the rotisserie axle.



(fig.2) grease fitting with mounting bracket

6. With the bearing removed unscrew the grease tube from the bearing and replace the grease fitting on the new bearing with this tube. (The replacement bearing will not require grease so reattaching the grease tube is optional) Note the position of the tube before removing this will help you to re-install it properly. If necessary, back up the tube to align-do not over tighten the tube. The tube should line up with the tube mounting bracket on the pit and then install the fitting saved previously to secure it. (fig. 3)



(fig.3) grease tube from grease fitting to bearing

7. Be sure to tighten all bolts and set screws when re-installing.

**Note:** On older model SPK 700's the axle must be removed in order to replace this bearing.