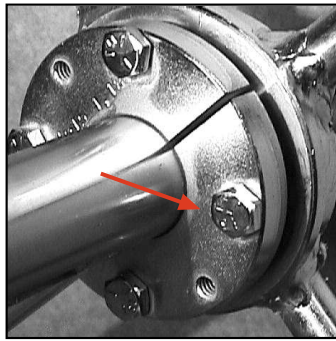


Rotisserie Wheels and Axle Replacement

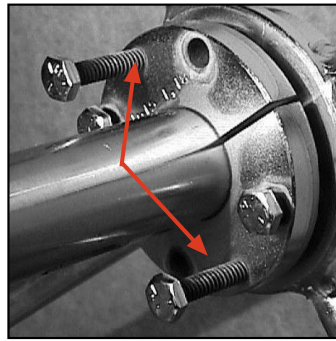
(Removal Instructions)

1. Remove the hanger racks from the inside of the oven.

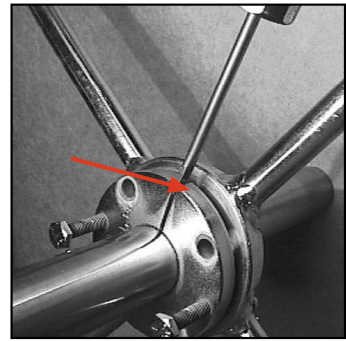
2. From inside the oven, loosen all four 1/4"-20x1" bolts that lock each wheel hub and split bushing to the axle. Remove two of the four bolts (fig. 1) screw these two bolts into the two threaded holes in the bushing flange. (fig. 2) As these two bolts are tightened the hub will be pushed off the bushing. Do the same for the other wheel.



(fig.1) 1/4" bolts and threaded holes



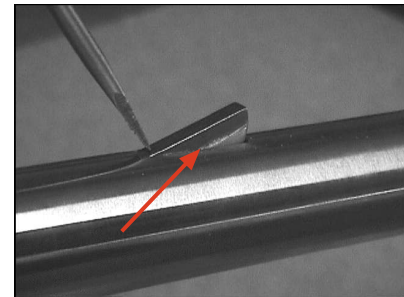
(fig.2) puller bolts



(fig.3)

3. Now that the wheels are loose on the axle, slide the bushings to the center of the shaft. Note it may be necessary to drive a screwdriver into the split of the bushing to make it slide on the axle easier. Do not hammer the screwdriver into the bushing too deep because it could crack the bushing (fig. 3).

4. Before the axle can be pulled out of the oven the woodruff keys must be removed from the axle. These keys are half round, thus tapping down carefully on one side of the key will cause the other end to "rock up" out of the keyway. (fig. 4)

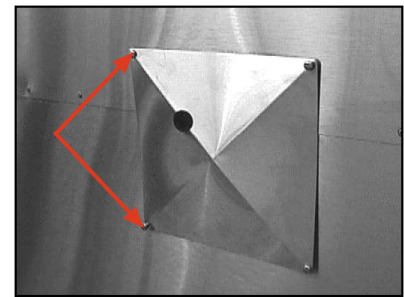


(fig.4) woodruff key

5. Disconnect power to the oven.

6. Follow steps 1-6 of the "large and/or small gear replacement" instructions to remove the gearbox.

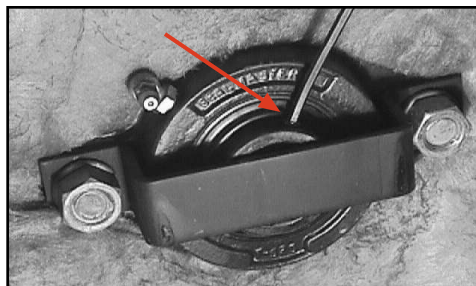
7. Remove the bearing cover on the side opposite the gearbox by removing the four screws. (fig. 5) loosen the two set screws on the bearing hub with an 1/8" allen wrench. With the allen wrench still in the second set screw rotate the bearing hub, this will remove any burrs caused when the set screws were tightened against the axle. (fig. 6) Do the same to the set screws of the bearing on the gearbox side.



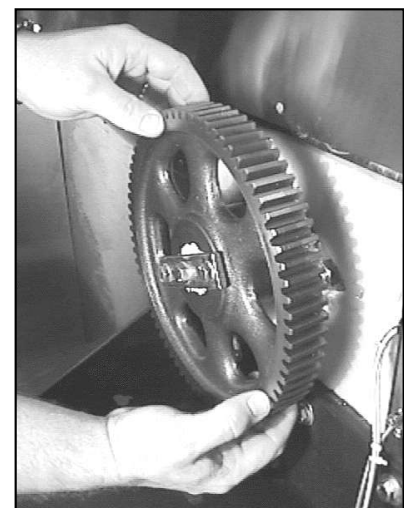
(fig.5) bearing cover

8. From the gearbox side slide the axle out of the oven by grabbing the big gear with your hands and pulling the axle toward you, (fig. 7) when the axle comes free of the bearing and side wall opposite the side you're pulling from, it will drop down, be expecting it. If you're only changing the rotisserie wheels, they can be pulled off when the axle end clears the wall. If you're replacing the axle pull it completely out of the oven once the wheels are off. If the axle won't slide through the bearing on the gearbox side, unbolt the bearing and then pull the axle and bearing together.

Note: if there is not enough room to pull the axle out from the gearbox side it can be pulled out from the opposite side-once the big gear is removed.



(fig.6) Bearing assembly



(fig.7) gear attached to axle

**Southern
PRIDE**

WOOD BURNING BBQ PITTS & SMOKERS

www.southernpride.com

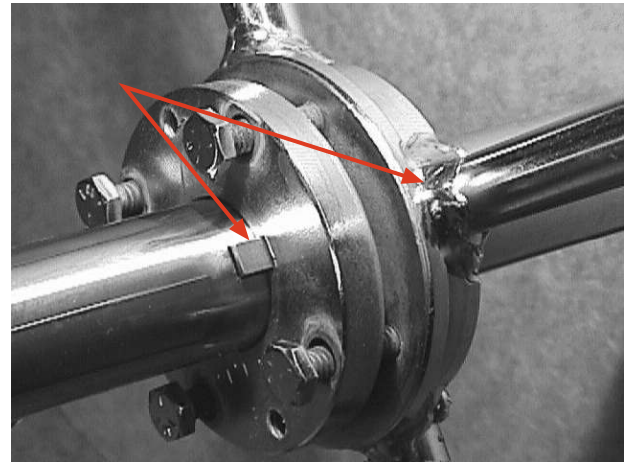
service/parts: 800-437-2679 - fax:618-993-0378

service@sopride.com - parts@sopride.com

Rotisserie Wheels and Axle Replacement

(Reassembly Instructions)

9. To reassemble the drive system: slide the axle part way in the oven, slide the rotisserie wheels back on the axle with the bushings and wheels facing each other. Slide the axle back into place, if the bearing on the big gear side was removed with the axle, be sure it goes back on with it. When properly installed, the end of the axle opposite the gearbox should be flush with the outer edge of the bearing. (Fig. 8)



(fig.8) Woodruff key must line up with spoke of rotisserie wheel

10. Lock the bearing set screws down using a 1/8" allen wrench, tighten the set screws on both bearings. (Fig. 8)

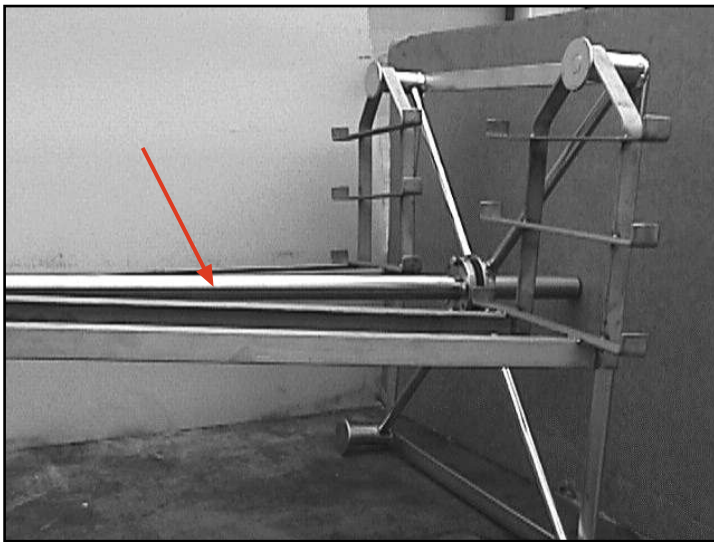
11. To reinstall the gearbox, reverse the instructions for "large and/or small gear replacement". Pay close attention to the note about gear mesh. Connect the wires to the gearbox motor and power up the oven.

12. Setting the rotisserie wheels: tap the woodruff keys back into the keyway slots on the axle. Install the four bolts back into the four holes of the rotisserie wheel hubs.(Fig. C). Snug the bolts up finger tight only. Slide the rotisserie wheels on the axles until they are back over the woodruff keys.

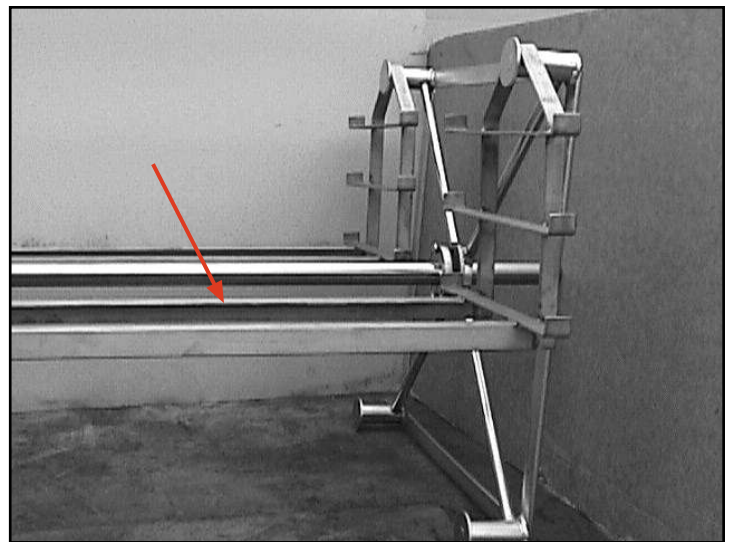
Note: only one spoke of the rotisserie wheel will line up with the woodruff key make sure this is done, otherwise it will not be possible to level the hanger racks (fig. 9)

13. Next put two hanger racks on the wheels opposite each other to make sure they are both in line. The hanger racks should be able to slide left to right between about 1/4"-3/8". If they will not slide then move one or both wheels in until you have the clearance needed. Once the wheels are set properly check to see if both hanger racks are level with the rotisserie axle, if the racks aren't level, rock the wheels forward or backward until they are, at this time the four bolts on each wheel can be tightened, use an alternating pattern to allow the bushing to pull in evenly. (Fig 10)

14. Put all the hanger racks on the wheels, run the rotisserie and let it make several complete revolutions to make sure the rack do not bind up and they are all level.



(fig.9) not aligned with axle



(fig.10) properly aligned with axle